

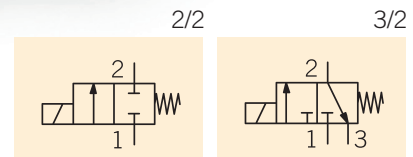


ITALIAN QUALITY AND FLEXIBILITY

## E.V. 10 mm LTC

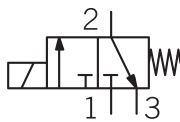
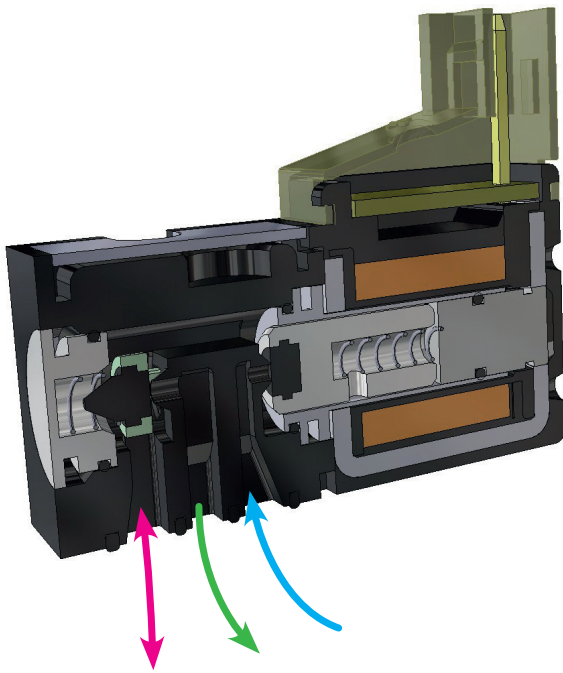
No energy consumption - No heating  
Ideal for battery/portable applications

Nessun consumo di energia - Senza surriscaldamento  
Ideale per applicazioni portatili/a batteria

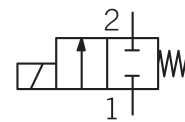
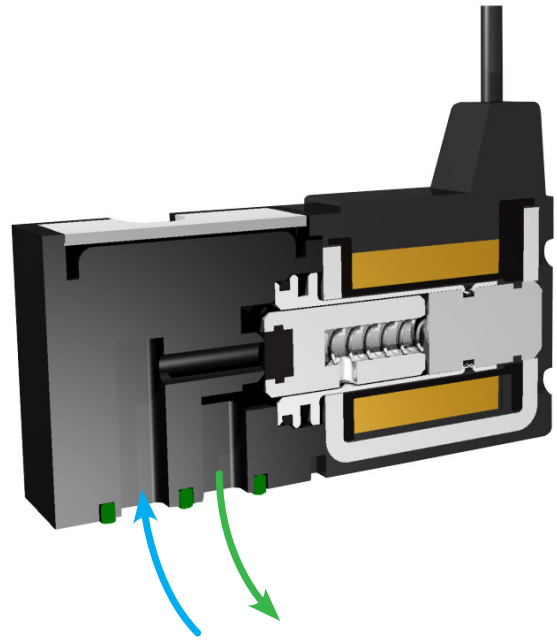


Latching solenoid valve consisting of an insulated copper wire class F (155°C) wound coil injection-encapsulated in a glass fiber reinforced polyamide polymer and an independent valve body "click" - separable. This solution allows to switch the plunger position by a short simple pulse, then the valve keeps its state until the next pulse at reversed polarity.

Microvalvola bistabile a magnete permanente costituita da una bobina avvolta con filo di rame smaltato classe F (155°C) ed inglobata ad iniezione con tecnopolimero poliammide caricato fibra vetro e da un corpo valvola indipendente separabile a "click". Questa soluzione costruttiva consente la commutazione da uno stato all'altro tramite un semplice impulso di breve durata, dopodiché la valvola mantiene il suo stato senza bisogno di energia fino al successivo impulso a polarità invertita.



**3/2 STD LATCHING**



**2/2 HF LATCHING**

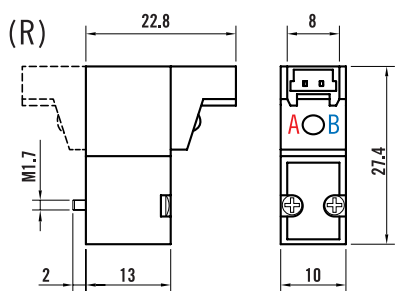
TECHNICAL SPECIFICATIONS

10 mm LTC

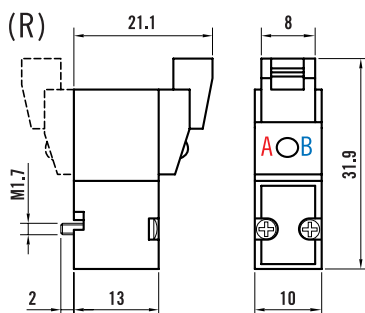
	10 mm 3/2 STD pneumatic interface			10 mm 2/2 HF pneumatic interface
	Ø 0.5 mm 3/2 MONO-DIR	Ø 0.8 mm 3/2 or 2/2 MONO-DIR	Ø 1.1 mm 3/2 MONO-DIR	Ø 1.4 mm 2/2 MONO-DIR
Working pressure [bar]	1 - 8 bar	0 - 7 bar	0 - 3 bar	0 - 2.5 bar
Flow rate [l/min]	8-12 @ 6 bar (ΔP 1 bar)	15-22 @ 6 bar (ΔP 1 bar)	20-22 @ 3 bar	35 @ 2.5 bar
Power [Watt]	1.3 W	2.0 W	2.0 W	2.0 W
Voltages DC [Volt]	5 - 6 - 12 - 24 V DC	5 - 6 - 12 - 24 V DC	5 - 6 - 12 - 24 V DC	5 - 6 - 12 - 24 V DC
Voltage tolerance	±10%	±10%	±10%	±10%
Latching pulse time (suggested)	> 40 msec	> 40 msec	> 40 msec	> 40 msec
Electrical insulation	1000 V AC	1000 V AC	1000 V AC	1000 V AC
Wire insulation class	F (155° C)	F (155° C)	F (155° C)	F (155° C)
Coil resistance tolerance	+/-5%	+/-5%	+/-5%	+/-5%
Fluid/ambient temperature	-10° / +50° C	-10° / +50° C	-10° / +50° C	-10° / +50° C
Max working frequency [Hz]	30	30	30	30
Duty cycle	100% ED	100% ED*	100% ED*	100% ED*
Life expectancy	> 50 Milion cycles	> 50 Milion cycles	> 50 Milion cycles	> 50 Milion cycles
Fixing	2 screws M1.7	2 screws M1.7	2 screws M1.7	2 screws M2
Weight	10 gr	10 gr	10 gr	10 gr
Protection degree (IEC 60529)	IP65 (coil with encapsulated cables)		IP51 (all the other versions)	

# DIMENSIONS

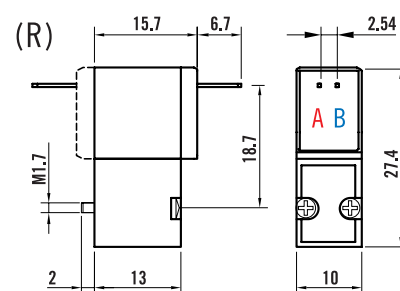
10 mm LTC



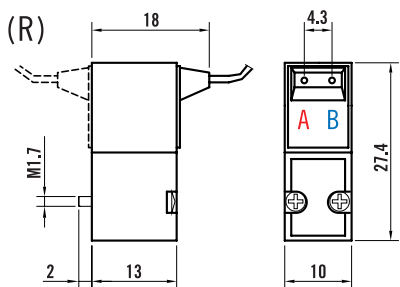
**90° CONNECTOR**  
CONNETTORE 90°



**LINE CONNECTOR**  
CONNETTORE LINEA



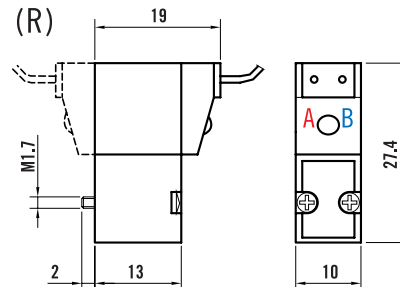
**PCB MOUNTING PINS**  
PIN USCENTI



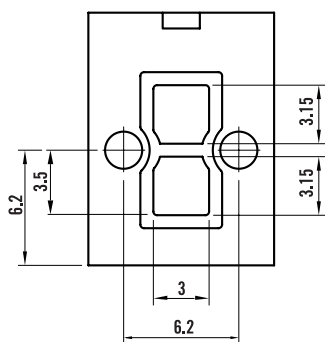
**ENCAPSULATED CABLES (NO PCB)**  
CAVI INGLOBATI (NO ELETTRONICA)

**PULSE 40 msec**

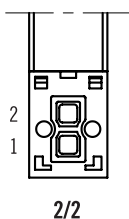
PULSE	A	B
Latch/Open	+	-
Unlatch/Close	-	+



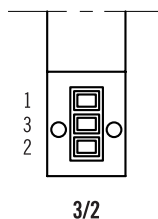
**PCB COVER CAP + CABLES**  
CUFFIA + CAVI



**2/2 HF PNEUMATIC INTERFACE**

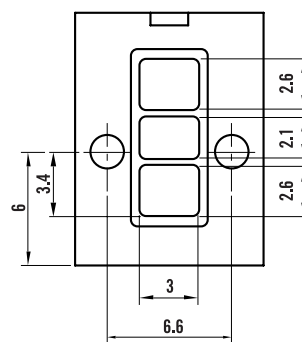


**2/2**



**3/2**

1	2	3
IN	OUT	EXH



**3/2 STD PNEUMATIC INTERFACE**

# CODIFICATIONS

10 mm LTC

L	O	FUNCTION	VOLTAGE	/	(R)	ELECTRICAL CONNECTION	ORIFICE SIZE
		3 = 3/2 STD	1 = 24 Vdc		R = Rotated coil 180°	2 = Encapsulated Cables 300 mm (IP65)	A = Ø 0.5 mm
		2 = 2/2 (STD or HF)	2 = 12 Vdc			4 = 90° Connector	B = Ø 0.8 mm
			4 = 6 Vdc			5 = Line Connector	C = Ø 1.1 mm
			6 = 5 Vdc			6 = PINs with flat cover	D = Ø 1.4 mm
						14 = Cables 100 mm+Molex M. (p/n 51006-0200)	3/2 STD
						15 = Cables 100 mm+Tyco MODU II (p/n 280358-0)	
						18 = Cables 100 mm+Molex F. (p/n 51065-0200)	2/2 HF



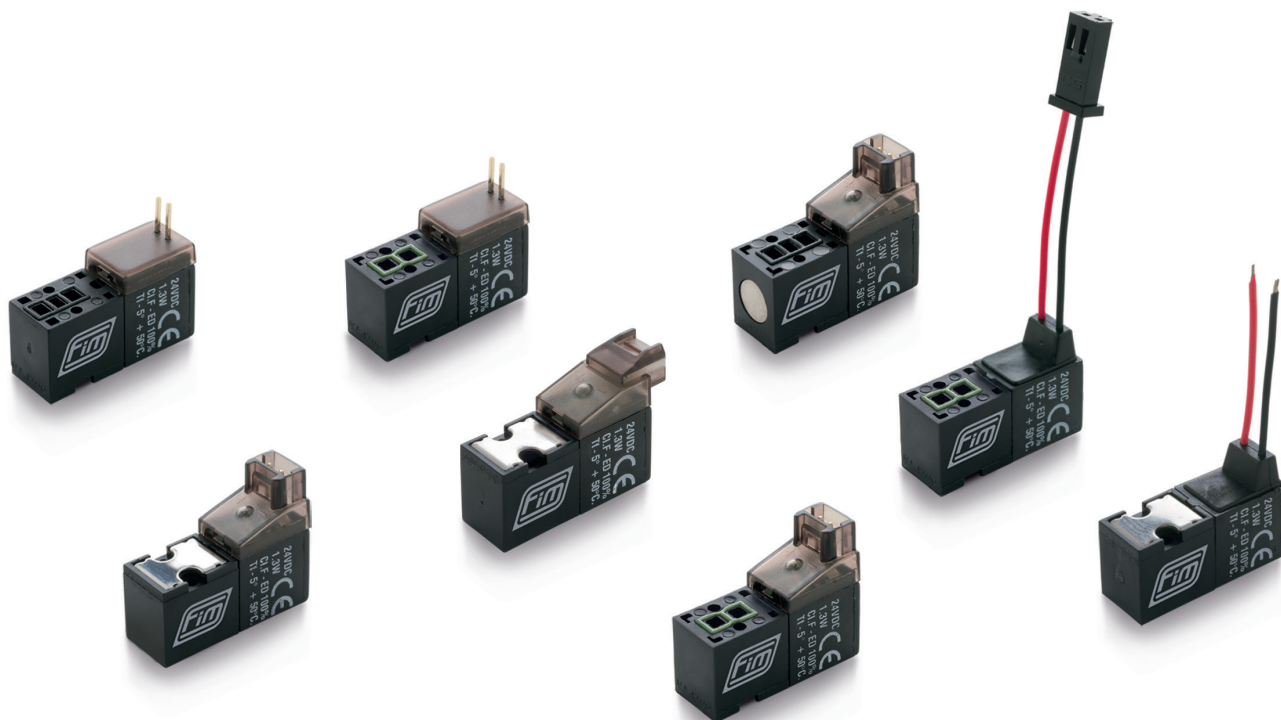
Example: **L032/2B** = 10 mm 3/2 LATCHING 12 Vdc 2 W Cables 300 mm Ø 0.8 mm 7 bar

## Customizations available on request

- Voltages (Volt)
- Powers (Watt)
- Electrical connectors (Molex, Tyco, Hirose, Jst)
- IP protection (Potting compound for applications IP 67)
- Pressures (bar)
- Silent operated for quiet environment

## Personalizzazioni disponibili su richiesta

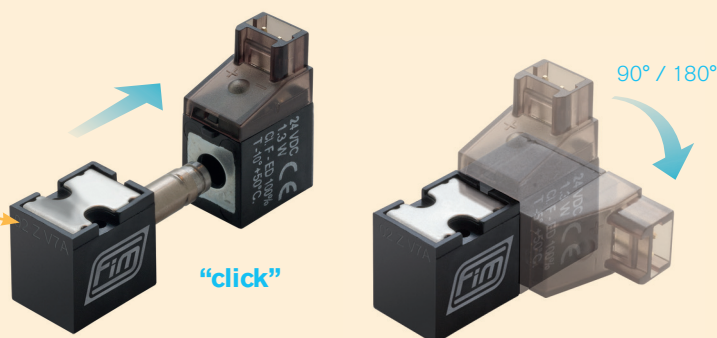
- Tensioni (Volt)
- Potenze (Watt)
- Connettori elettrici (Molex, Tyco, Hirose, Jst)
- Protezione IP (Resinatura per applicazioni IP 67)
- Pressioni (bar)
- Funzionamento silenzioso per ambienti quieti



Some examples of 10 mm LTC  
Alcuni esempi di valvole 10 mm LTC

traceability code  
codice di rintracciabilità

WW Y XXX  
week year  
valve body ref.  
A = 2013  
B = 2014  
C = 2015  
D = 2016  
E = 2017  
F = 2018  
...



Coil can be rotated in any position with a "click" system  
Bobina orientabile in ogni posizione con sistema a "click"

MODULAR  
SYSTEM  
PATENTED IN 1996

SISTEMA  
COSTRUTTIVO  
MODULARE  
BREVETTATO DAL 1996



ITALIAN QUALITY AND FLEXIBILITY